

USER MANUAL

Model KLR50-LA Water Dispenser Atmospheric Water Generator Type P50S (smart version)



- It is highly recommended to read this manual before use.
- Please keep this manual for future reference.



MANUFACTURER: SHENZHEN FND AIR AND WATER TECHNOLOGY DEVELOPMENT CO. LTD
Distributed by: AWG-Europe Ltd.

INTRODUCTION

Dear User!

Congratulations on the purchase of our atmospheric water generator. We are committed to providing you with healthy, sustainable drinking water that is good for you and the environment.

Water is an indispensable resource for all biological life. Without water, there would be no life. 70.8% of the Earth's surface is covered with water, of which only 3% is fresh water. Most of the fresh water is enclosed in ice caps and glaciers. All lakes, rivers and swamps make up only 0.3% of the available fresh water.

It is estimated that there are 12 quintillion liters of water in the earth's atmosphere; That's 10 times more than all rivers, lakes and swamps combined.

With global warming, population growth, industrial growth and agricultural demand. Recent scientific research estimates that by 2050 the entire globe will be under severe water pressure. Currently, 1.2 billion people do not have access to safe drinking water.

Water pollution also poses a serious threat to personal health. Harmful chemicals have been found in many water resources, including the leaching of harmful chemicals from tanks in which water was stored.

The use of atmospheric water generators benefits personal health and the environment by producing water free of clean chemicals and bacteria and eliminating the risk of contamination of storage tanks. This, in turn, reduces the demand for groundwater and the production of plastic bottles.

ATTENTION:

- Read this manual before connecting the machine to electricity
- Please keep this manual for future reference
- The date of manufacture and serial number refer to the barcode on the machine
- If you order an accessory or request a repair, please contact our customer service.



CONTENTS

• Introduction	Page 1
• Contents	Page 2
• Product Introduction	Page 3
• Product Features	Page 3
• Safety Precautions	Page 4-5
• Product Map	Page 6
• Installation Guide	Page 7
• How it Works	Page 8
• Additional Benefits	Page 9
• Display Introduction	Page 10
• Functions	Page 10-11
• Care & Maintenance	Page 14-15
• Air Filter Replacement and Reset	Page 15
• Water Filter Replacement and Reset	Page 15-16
• External Water Inlet	Page 17
• Trouble Shooting	Page 18-19
• Fault Codes	Page 19
• Technical Specifications	Page 20
• Packing List	Page 20
• Replacement Filters	Page 21
• Circuit Diagram	Page 21
• Warranty	Page 22

1. Product Introduction

- The Atmospheric Water Generator is a high-tech water supply machine that provides the highest quality drinking water by harvesting water from the humidity in the air. This process in turn dehumidifies and purifies the air in the room.
- The Atmospheric Water Generator is designed for multiple applications. Residential, commercial, industrial, hospitality, medical and marine use.

2. Product Features

- Multiple filtration system.
- Manufactured from high quality food grade materials.
- Microcomputer control technology for automatic operation.
- Option to connect to external water supply.
- Advanced water filtration system to ensure pure drinking water.

3. Safety Precautions

- ⚠ Do not attempt to repair the machine or power cable. Contact your local dealer for service support.
- ⚠ Only connect the unit to an appropriate power supply.
- ⚠ Do not pull or damage the power cable.
- ⚠ Do not connect the power supply with wet hands.
- ⚠ Keep the power cable out of reach of children.



- ⚠ To prevent damage to the machine, disconnect power supply during thunderstorms.



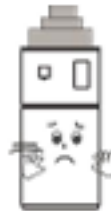
- ⚠ Disconnect the power supply before cleaning or maintenance.



- ⚠ Do not use multiple connections on the machine's power supply connection.
- ⚠ Do not place or use the machine in volatile, corrosive or flammable chemical environments.

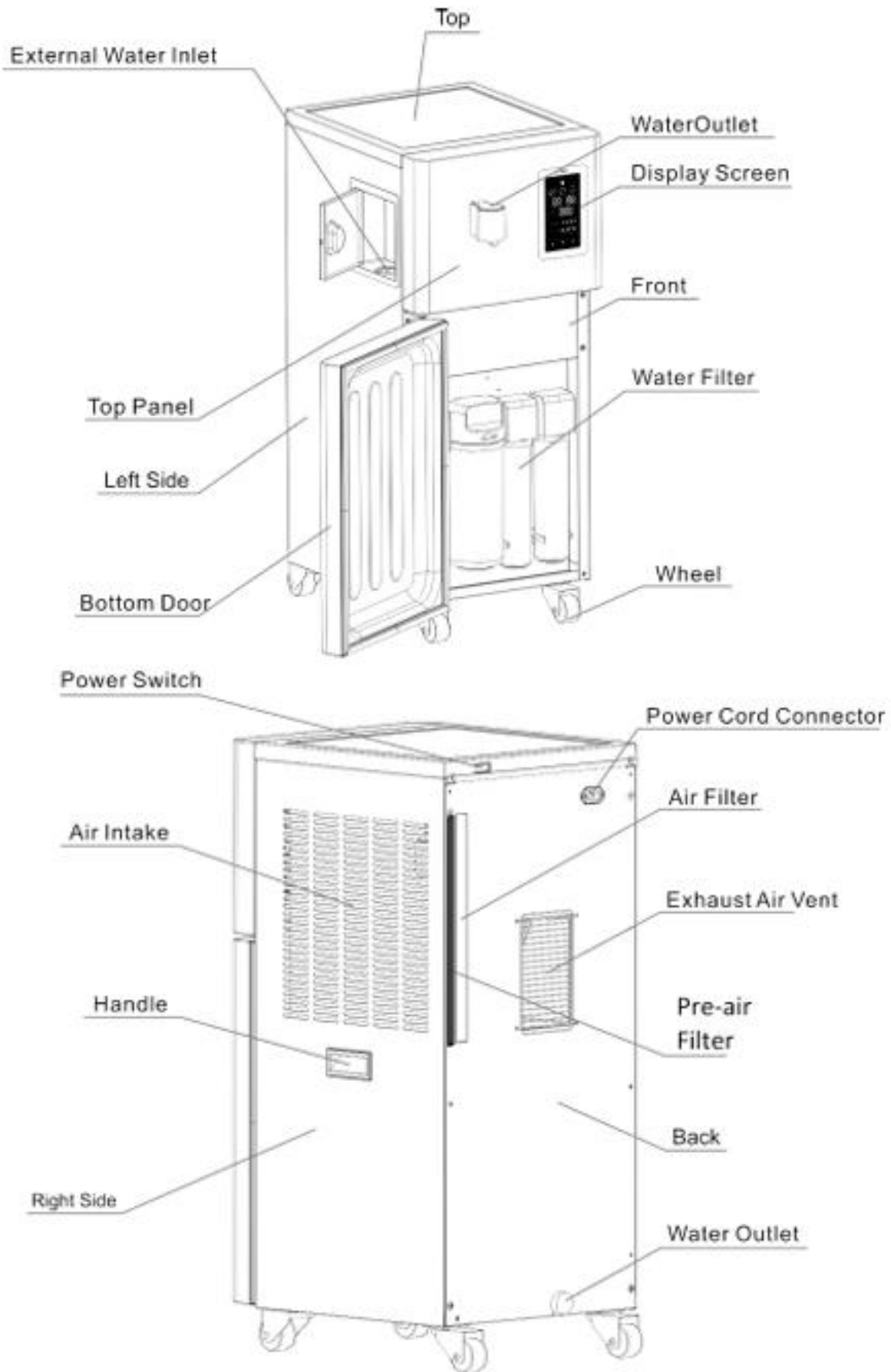


- ⚠ Should abnormal sounds, smell, temperature or leakage occur, disconnect from power supply and contact your local dealer for service support.
- ⚠ Do not place any objects on top of the unit.



- ⚠ Always keep the unit in an upright position.
- ⚠ Do not place any flammable objects within 40 cm of the back of the machine because of hot exhaust air.
- ⚠ When moving the machine, the water tank must be drained to avoid water spillage within the machine.
- ⚠ To prolong the air filter lifespan place unit in the best possible location.
- ⚠ The machine should be operated in temperatures above zero.
- ⚠ Do not remove the back cover of the machine.
- ⚠ Children should be supervised when operating the machine.

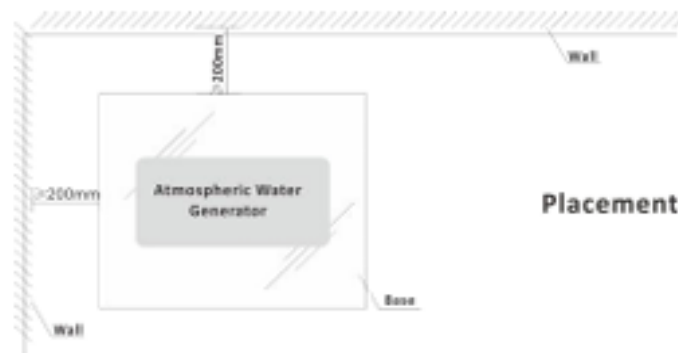
4. Product Map.



• Any changes of the manual for the improvements of the products will not be given.

5. Installation Guide

- The machine must be placed on a firm horizontal surface.
- Avoid fitting the machine at any angles or may result in excessive noise during operation.
- Ensure a minimum gap of 200 mm between machine and walls to allow sufficient cooling and ventilation.



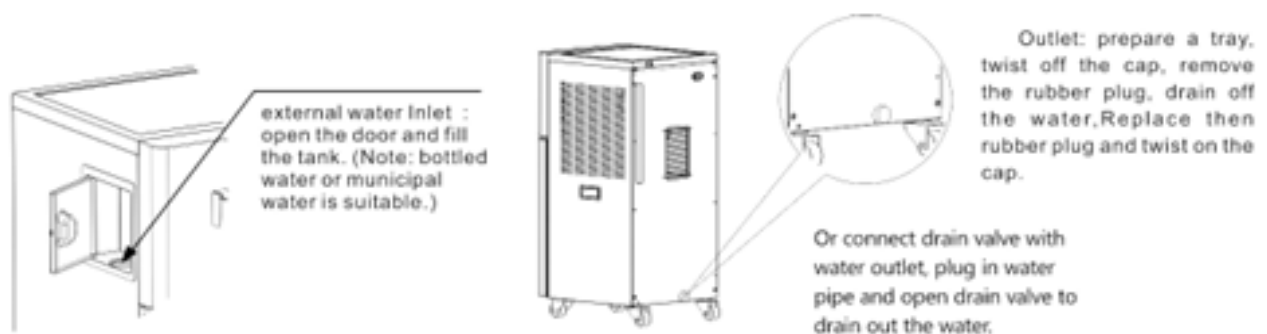
P1

- Leave the machine in its final position for 4 hours before turning the power on. This will allow for optimum operation.

First Use Reminder:

During first time use, the machine will automatically run a 10 min long filter flushing mode when the collection water tank level reaches (M) level (around 3~6 liters). There will be a Beep sound when automatic flushing is complete. You must then drain the water tank from the water outlet. The next tank of water produced is ready for drinking.

Tip: To save waiting time, you can add bottle or municipal water (3 liters above) to the External Water Inlet then wait for automatic flushing mode to complete and then drain the tank.

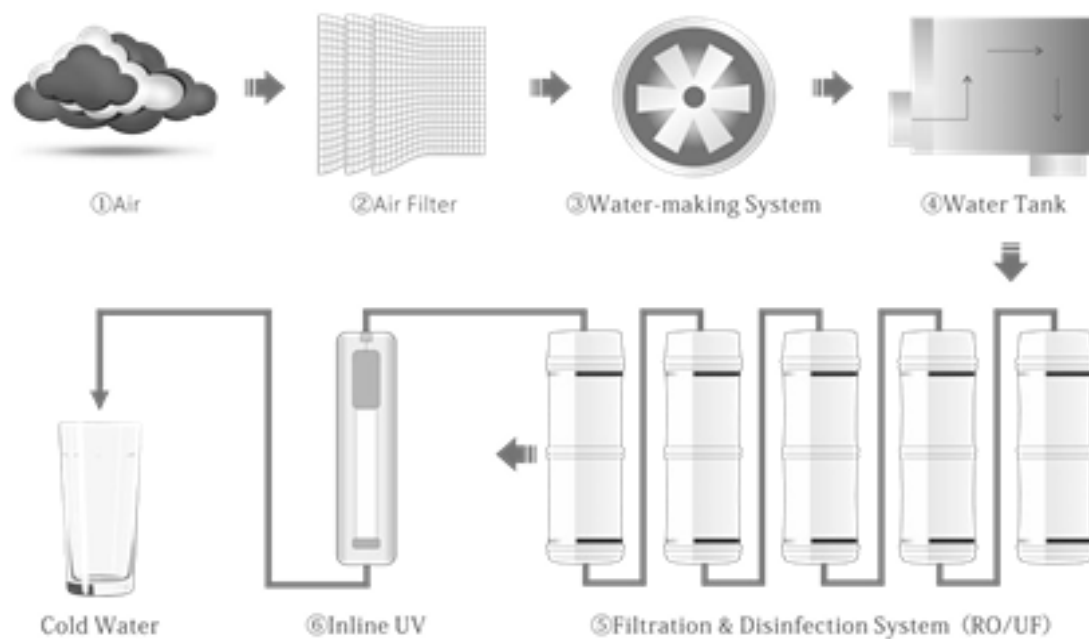


P2

- Ensure the machine is positioned with enough ventilation.

6. How It Works

Water is produced by harvesting moisture from the air. Humid air is drawn into the machine and passed through a multistage air filter and then cooled to below dew point. Once the air is cooled, condensation occurs. The condensate flows into the water tank. The water is then pumped through a multistage filtration including a reverse osmosis system before dispensing. The water in the water tank is automatically circulated through the filters at intervals to maintain the water quality.



7. Additional Benefits

There are numerous benefits that cover personal health, the environment and also economic benefits. Below are just a few of the many benefits.

- Sustainable water supply.
- Zero waste water production.

- Bottle free.
- Reduction in emissions from manufacturing of plastics.
- Reduction in transportation emissions.
- Water produced creates savings compared to bottled water costs.
- Can be installed anywhere in a building without installing water lines.
- No bulky water container storage space required.
- No more delivery or collection disruptions.
- No heavy lifting of heavy water containers.
- Chemical free.
- Fluoride free.
- Carcinogen free.
- Bacteria free.
- Natural Minerals.
- Dehumidifies the room.
- Purifies the air in the room.
- Reduces allergen particles in the air.

8. Display Introduction

Atmospheric Water Generator Display (P3)



1. Dispense
2. Water Volume Dispensing
3. Water Level
4. Ambient Water
5. Warm Water
6. Hot Water

Functions

● Drinking Operation Area

Touch Drinking to enter drinking water interface

1) Dispense

Touch water outlet to get water, then touch again to stop.

2) Water Volume Dispensing

Slip to select water volume 300ml, 500ml, 700ml or unlimited.

3) Water Level

Low, Medium or High levels, the machine will allow dispensing of water. Lack level is too low or empty and water cannot be dispensed.

4) Ambient Water

Select Ambient water and touch water outlet to get ambient water

5) Warm Water

Press for Warm water (about 40 degree C).

6) Hot Water

Press for Hot water (90 degree C)

7) Child Lock

Press and hold the child lock button for 3 seconds to unlock hot water function. If the machine is not used for 15 seconds, the child lock will automatically lock to prevent warm and hot water accidents.



- **Touch Status to enter the interface**

6) Temperature

This shows ambient temperature of the room. Touch Temperature will record the highest and lowest temperature curves of each day in the past week.

Note: If the temperature is below 15 degree Celsius and the compressor will not run until the temperature rises 15 degree Celsius

7) Humidity

This shows the ambient humidity in the room. Touch Humidity will record the highest and lowest humidity curves of each day in the past week
Note: If the humidity is below 25% and the compressor will not run until the humidity rises above 25%.

8) Total Water

Shows total water dispensing of each day in the past week.

9) Air Filter

This shows the condition of the air filter.

10) Water Filter

This shows the condition of the water filter.

11) Change Water Filter

Touch to replace new water filter.

12) Change Air Filter

Touch to replace new air filter.



● Setting

Touch Setting to enter this interface

13) Wifi connection

Show the connection of the machine with network.

14) Water Production

Turn on, the machine will produce air water in right condition. Turn off, the machine will not produce any air water.

15) Water Making Setting

Select Mode A by time and Mode B by water level, then the machine will produce water accordingly.

16) External Water

Touch to guide external water proceed.

17) Manual

Touch to guide FAQ, Installation.

9. Care & Maintenance

- 1) Clean the surface of the machine with a dry or damp cloth .
- 2) Turn off the machine, clean the air intake grill.
- 3) Clean collection water tank about 3~6 months to maintain high quality drinking water.

Attention: When Cleaning

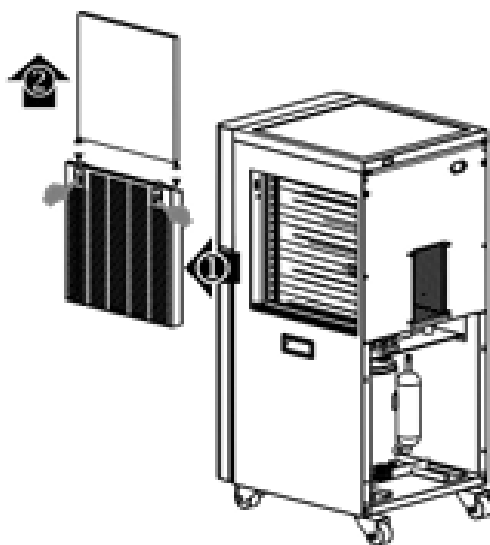
- 1) Clean the machine at least once per week.
- 2) When cleaning remove the power cable from the outlet.
- 3) Do not use hot water, any strong chemicals or solvents to clean the machine. Use a damp cloth with a mild soapy solution only.
- 4) Clean with a damp cloth and wipe dry before replacing.
- 5) Do not hose or wash down the machine, it may result in short circuit damage and corrosion within the machine.
- 6) After cleaning check the power cord and connector is free from damage and moisture.
- 7) If the machine has been left standing and unplugged from power for a long period of time. First drain the water tank and dry off the machine before turning the power on again.

 **Do not wash main air filter or wipe with damp cloth**

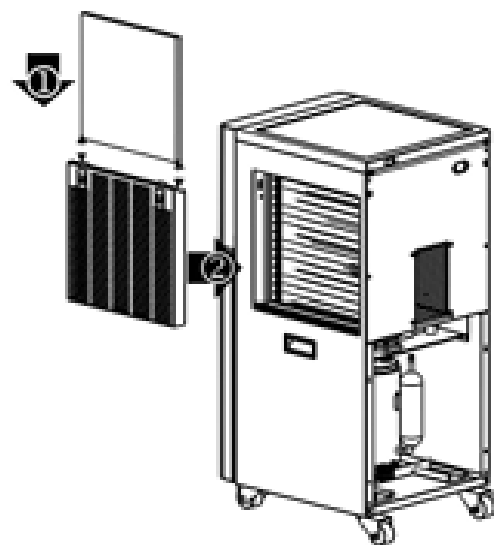
10. Air Filter Replacement and Reset

The machine has microcomputer control of the air filter. It will give a Red Renew warning on the display when the air filter needs to be changed.

- 1) Leave power on. Press On/Off button and turn the water making off.
- 2) Wait 60 seconds for the fan to stop if the fan was running.
- 3) Remove air filter.
- 4) Install replacement filter.
- 5) Reset the air filter, after complete will automatically return to Status interface.
- 6) interface.
- 7) Check air filter if 100% reset.



Removal



Reinstallation

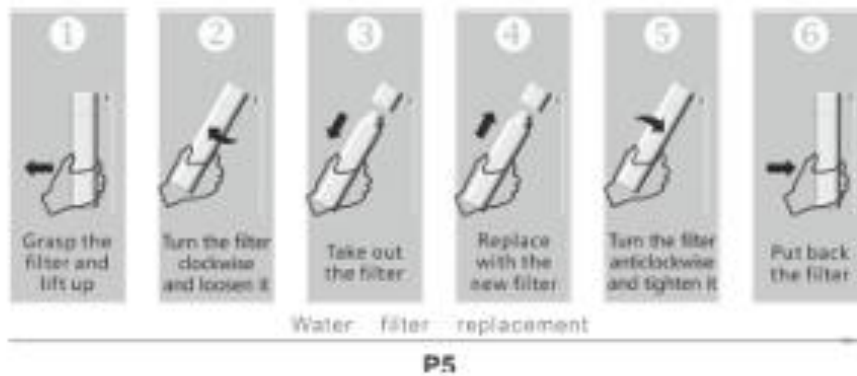
11. Water Filter Replacement and Reset

The machine has microcomputer control of the water filters. The display will show the condition of the water filters. When the filters need to be replaced the display will begin red flashing to indicate.

- 1) Open water filter door.
- 2) Remove the filter to be replaced.
- 3) Install replacement filter.
- 4) Close water filter door.
- 5) Reset new water filter .
- 6) After complete press flushing button, water will automatically turn to

filter flushing mode.

- 7) When finish flushing, drain the tank water from the back outlet.
- 8) Check water filter if 100% reset.



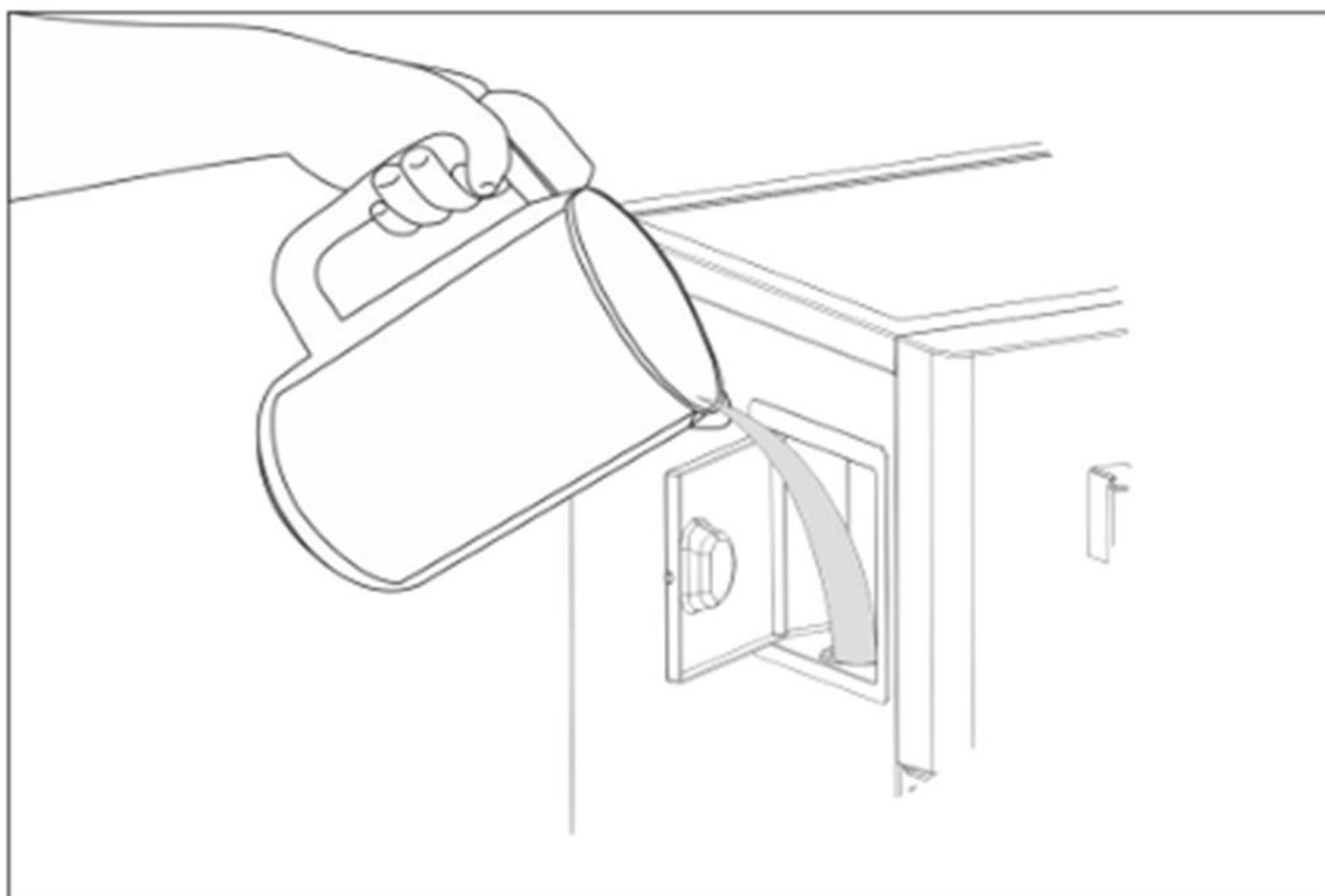
Reminder: It is important to change the water filters on time to ensure high water quality.



Attention: It is highly recommended to contact your local service center to arrange for replacement filters or any repairs on the machine.

12. External Water Inlet

- 1) Open the water inlet door.
- 2) Pour water into the opening.
- 3) Take care not to spill excessive amounts of water.
- 4) Stop filling the tank when the water level "H" light is illuminated.
- 5) You can use bottled or municipal water to fill the tank.



13. Trouble Shooting

Problem	Possible Cause	Solution
Water production is very slow.	Ambient temperature or humidity is out of working range.	Use the external water supply until the temperature or humidity is in working range.
	Air circulation is poor.	Place the unit in an area with better air circulation.
	The air intake is blocked or restricted.	Remove obstructions and ensure machine is not too close to the wall.
	Machine is running in Quiet Mode.	Press Quiet button to run the fan at normal speed.
Water production stops	Reset the main power switch on the back of the machine.	The machine will restart automatically.
	The high level water indicator is illuminated.	The machine will not produce water if the water tank is full.
	E1 or E2 warning on display.	Contact local service centre.
	Ambient temperature or humidity is out of working range.	The compressor will not run if the ambient temperature is below 15 ° C or above 43 °C or if the humidity is below 25%
	Unsteady Voltage	Install a voltage regulator.
Water production stops before water tank is full	The ambient temperature is above 43 C	The compressor will stop running for 3 minutes due to high ambient heat then restart.
The machine is too noisy	The machine is not levelled correctly.	Check the machine is levelled correctly.
	External water supply or bottom door is not closed properly.	Check the External water supply or bottom door are closed properly.
	Are there items on top of the unit?	Remove any items from the machine.
Water does not dispense	Water filters are not filled with water.	Wait until water level in the water tank increases.
	Low water level light flashing.	Wait until water level in the water tank increases.
The machine is leaking water	If the machine was moved or not levelled correctly the water tank may have spilled.	Dry off the machine. If the leak continues unplug the machine and contact local service centre.
Water dispenses slowly.	The filters need to be replaced.	Follow steps in section 12.

14. Fault Codes.

E1 code indicates temperature sensor is faulty.

E2 code indicates humidity sensor is faulty.

E3 code indicates the collection water tank level sensor is faulty.

E13 code indicates exhaust temperature sensor is faulty.

E14 code indicates evaporator temperature sensor is faulty.



15. Technical Specifications

Model: KLR – 50LA	Water Tank Volume: 15L	Storage Temperature: -10 C – 60 C
Frequency: 50 Hz	Total Power: 1230W	Operating Temperature: 15 C – 43 C
Rated Voltage: 220 V ~240V	Water-making Power: 1230W	Storage Humidity: 5% - 80%
Current: 5.7A	Net Weight: 52kg	Operating Humidity: 25% or above
Refrigerant: R410a	Refrigerant Volume: 570g	Anti-shock: I
Waterproof: IPX0		
Dimensions: (W x L x H) 400 x 473 x 920 (mm)		
Capacity: 50L/Day (@ 30 C and 80% humidity)		

16. Packing List

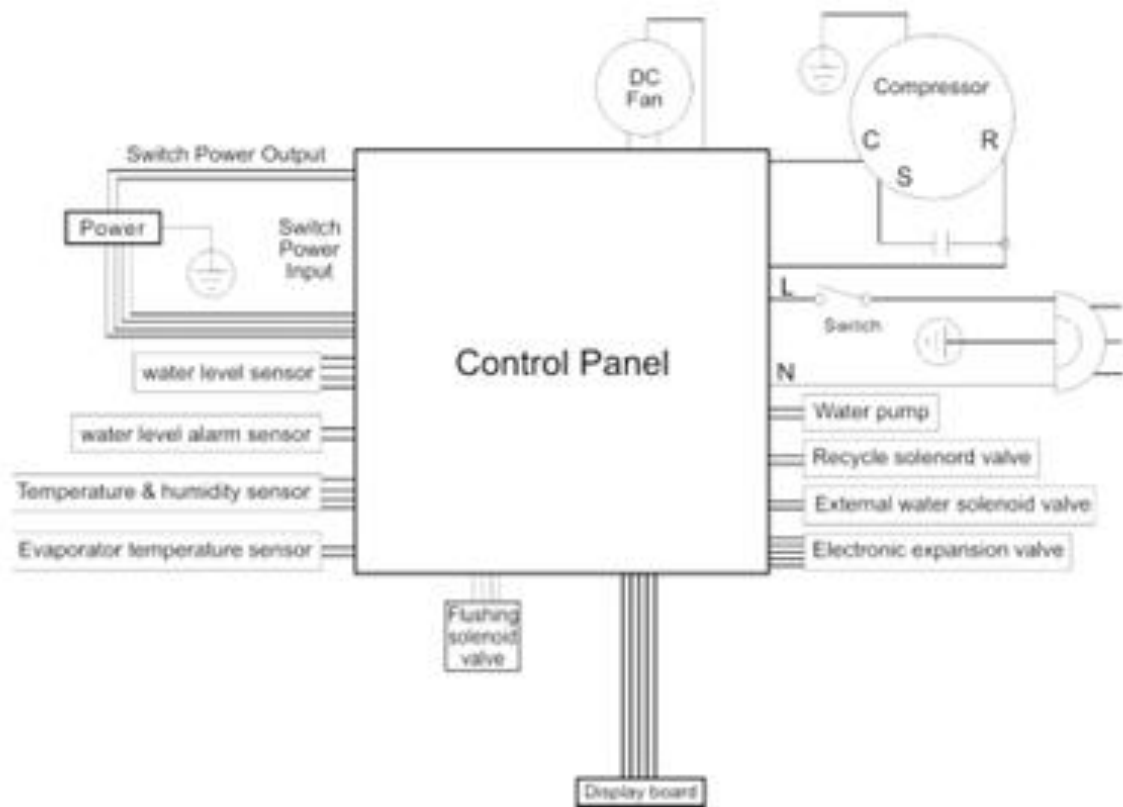
Item	Quantity	Unit
Atmospheric Water Generator	1	pc
User Manual	1	pc
Warranty Card	1	Pc
Power Cord	1	Pc
Water Filters	1	Set
Air Filter	1	pc

17. Replacement Filters

	Description	Part Number
RO System (Water Filters)	1. PP Sediment Filter 2. RO Membrane Filter 3. Mineral Filter 4. M-Cell Filter	P50PP1 P50RO2 P50MF3 P50MC4

	3 in 1	Part Number
Air Filter	1. HEPA Cotton Filter 2. Activated Carbon modified molecular Sieve 3. PP Cotton	P50AF0

18. Circuit Diagram



Remark: the above map is for your reference only, please take the map on the name plate of the machine as right one.

19. Warranty

General Terms and Condition (GTC) contains regulations of warranty – that available under „Useful Link” section of the www.wizzwell.com web shop.

The Customer may claim repair or replacement on the basis of his warranty right, request a price reduction in cases provided for by law, or ultimately withdraw from the contract if the debtor has not undertaken repair or replacement, is unable to fulfil this obligation within a reasonable period, protecting the interests of the right holder, or if the interest of the claimant in repair or replacement has ceased.

The warranty claim can be enforced during the warranty period, the warranty period for EU consumers is **3 years** according to EU regulations and Hungarian Government Decree 151/2003 (IX.22.)

When is the Seller released from its warranty obligation?

The Seller is released from its warranty obligation if it proves that the cause of the defect arose after performance (warranty period). The Seller shall be released from its warranty obligation if it proves that the cause of the defect arose after performance for reasons attributable to the consumer: such as vandalism or that the consumer failed to replace the filters of the device after 12 months of operation and/or use of a non-original accessory. The seller may refuse the consumer's warranty claim if the safety film on the back of the device is damaged or missing, or if it is defective because the repair was not carried out by an authorized service or because the customer used a non-original additional device and accessory.

Please note that due to the same defect, you may have a warranty and guarantee claim, as well as a product warranty and guarantee claim at the same time, in one claim process.

To receive warranty service, you must fill out service form <https://wizzwell.com/service/> or contact the authorized local distributor. Contact details can be found on the back side of the manual.



SERIAL No.:
DATE:

AWG-Europe Ltd.

WizzWell™ Brand representation and customer service

Authorized **FND** distributor and service provider

WhatsApp: +36 30 846 23 66

Web.: <https://awgeurope.com>

Web shop: <https://wizzwell.com>

E-mail: info@wizzwell.com